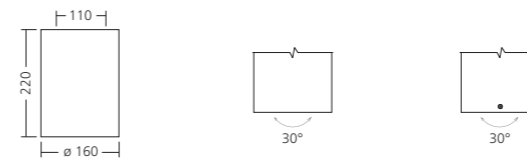
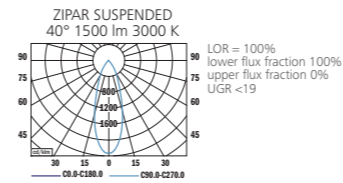


## ZIPAR SUSPENDED

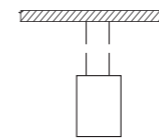
FACET  
LED



### PHOTOMETRY



### MOUNTING



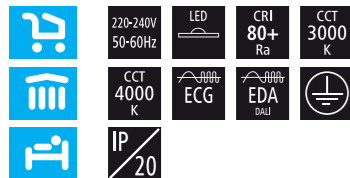
TYPE	NET LUMEN OUTPUT (at Ta = 25 °C) (lm)	POWER CONSUMPTION (W)	SYSTEM EFFICACY (lm/W)	COLOUR RENDERING INDEX CRI (Ra)	CORRELATED COLOUR TEMPERATURE CCT (K)	BEAM ANGLE	WEIGHT (kg)
ZIPAR SUSPENDED	1500	12	125	80+	3000	24°/40°	2.3
ZIPAR SUSPENDED	1550	12	129	80+	4000	24°/40°	2.3
ZIPAR SUSPENDED	2400	19	126	80+	3000	24°/40°	2.3
ZIPAR SUSPENDED	2500	19	132	80+	4000	24°/40°	2.3
ZIPAR SUSPENDED	3550	31	115	80+	3000	24°/40°	2.4
ZIPAR SUSPENDED	3650	31	118	80+	4000	24°/40°	2.4

Luminous flux tolerance +/- 10%



COMMERCIAL LED LUMINAIRES

# Zipar Suspended



### EN

**Mounting**  
Suspended (SSD)  
**Light source**  
LED  
**Optical system**  
Facet reflector (FRE)  
**Wiring**  
Electronic control gear FIX/DALI (ECG/EDA)  
**Materials**  
Housing: extruded aluminium  
Reflector: facet anodised aluminium  
Top cover: sheet steel  
Rope suspension  
**Surface finish**  
Housing: white RAL 9003 (W03)  
**Service lifetime**  
50,000 hours/L80/B10 (ta 25°C)  
**Ambient temperature**  
From -20 °C to +35 °C

### DE

**Montage**  
Hängend (SSD)  
**Lichtquelle**  
LED  
**Optisches System**  
Facettierter Reflektor (FRE)  
**Vorschaltgerät**  
Elektronisches Vorschaltgerät FIX/DALI (ECG/EDA)  
**Material**  
Körper: extrudiertes Aluminium  
Reflektor: facettiertes eloxiertes Aluminium  
Obere Abdeckung: Stahlblech  
Seilauflhängung  
**Oberflächenveredelung**  
Körper: Weiss RAL 9003 (W03)  
**Lebensdauer**  
50,000 Stunden/L80/B10 (ta 25°C)  
**Umgebungstemperatur**  
Von -20 °C bis +35 °C

### FR

**Montage**  
Plafonnier Suspendu (SSD)  
**Source lumineuse**  
LED  
**Système optique**  
Facet réflecteur (FRE)  
Équipement électrique  
Ballast électronique FIX/DALI (ECG/EDA)  
**Matériels**  
Corps: aluminium extrudé  
Réflecteur: aluminium à l'aspect anodisé  
Couvercle supérieur: tôle d'acier  
Câble de suspension  
**Finition de surface**  
Corps: blanc RAL 9003 (W03)  
**Durée de vie utile**  
50,000 heures/L80/B10 (ta 25°C)  
**Température ambiante**  
De -20 °C à +35 °C

### SK

**Montáž**  
Závěsné (SSD)  
**Svetelný zdroj**  
LED  
**Optický systém**  
Fazetový reflektor (FRE)  
**Elektrická výbava**  
Elektronický predradník FIX/DALI (ECG/EDA)  
**Material**  
Těleso: extrudovaný hliník  
Reflektor: anodizovaný fazetový hliník  
Vrchtný kryt: ocelový plech  
Lankový záves  
**Povrchová úprava**  
Těleso: biela RAL 9003 (W03)  
**Servisná životnosť**  
50,000 hodín/L80/B10 (ta 25°C)  
**Teplota okolia**  
Od -20 °C do +35 °C

### ES

**Montaje**  
Suspendidas (SSD)  
**Fuente luminosa**  
LED  
**Sistema óptico**  
Reflector facetado (FRE)  
**Cableado**  
Equipo de control electrónico FIX/DALI (ECG/EDA)  
**Material**  
Cuerpo: aluminio extruido  
Reflector: aluminio anodizado facetado  
Cubierta superior: lámina de acero  
Cable de suspensión  
**Tratamiento de la superficie**  
Cuerpo: blanco RAL 9003 (W03)  
**Vida útil**  
50,000 horas/L80/B10 (ta 25°C)  
**Temperatura ambiente**  
Desde -20 °C a +35 °C

### IT

**Installazione**  
A sospensione (SSD)  
**Sorgente luminosa**  
LED  
**Sistema ottico**  
Riflettore sfaccettato (FRE)  
**Cablaggio**  
Ballast elettronico FIX/DALI (ECG/EDA)  
**Materiali**  
Corpo: estruso di alluminio  
Riflettore: alluminio anodizzato sfaccettato  
Copertura superiore: lamina d'acciaio  
Cavo di sospensione  
**Finitura**  
Corpo: bianco RAL 9003 (W03)  
**Durata di vita**  
50,000 ore/L80/B10 (ta 25°C)  
**Temperatura d'ambiente**  
Da -20 °C a +35 °C

### RU

**Установка**  
Подвесная (SSD)  
**Источник света**  
LED  
**Оптическая система**  
Рифленый отражатель (FRE)  
**Электрическое оснащение**  
Электронный аппарат FIX/DALI (ECG/EDA)  
**Материал**  
Корпус: экструдированный алюминий  
Отражатель: рифленый анодированный алюминий  
Верхний крышка: листовая сталь  
Тросовый подвес  
**Отделка поверхности**  
Корпус: белый RAL 9003 (W03)  
**Срок службы**  
50,000 часов/L80/B10 (та 25°C)  
**Температура окружающей среды**  
От -20 °C до +35 °C



THE MANUFACTURER CONTINUES TO DEVELOP PRODUCTS THROUGHOUT THEIR LIFETIME. THEREFORE, THE COMPANY RESERVES THE RIGHT TO MODIFY MATERIALS, COMPONENTS, AND TECHNICAL PARAMETERS WITHOUT NOTICE. LUMINOUS OUTPUT AND ELECTRICAL LOAD HAVE AN INITIAL TOLERANCE OF +/- 10% FROM NOMINAL. FAILURE OF ONE LED LIGHT POINT WITHIN A LUMINAIRE DOES NOT IMPAIR FUNCTIONAL PERFORMANCE AND SO IS NOT CLASSIFIED AS REASON FOR COMPLAINT.